



**IMPORTANT**  
WORKS EXCLUSIVELY WITH  
XTREME GARAGE® AND  
PERFORMAX™ DOOR OPENERS  
AND ACCESSORIES

**⚠ WARNING**

To Prevent **SERIOUS INJURY** or **DEATH**:

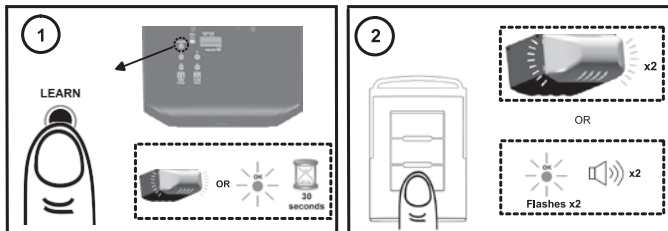
- Keep transmitter and battery out of reach of children.
- NEVER permit children to access the Push Button or remote transmitters.
- Operate the door **ONLY** when it is properly adjusted, and there are no obstructions present.
- ALWAYS keep a moving door in sight until completely closed. NEVER cross the path of a moving door.



To reduce risk of fire, explosion or electric shock:

- DO NOT short circuit, recharge, disassemble or heat battery
- Replace with 27AE 12 volt batteries **ONLY**. Dispose of batteries properly.

## Programming Transmitter



To Program Transmitter(s) :

1. To program a hand held transmitter, press/release the "LEARN" button once on the rear control panel, courtesy light will glow \* or "OK" LED will glow and beep". The unit is now ready to accept a transmitter in the next 30 seconds. (Fig.1.)
2. Press/release any desired button on the Transmitter. (Fig.2.)
3. The courtesy light will flash twice \* or "OK" LED will flash and beep twice\* indicating transmitter is stored successfully.

Up to 20 Transmitters (including wireless keypad codes) can be added to the unit by repeating the above procedures.

If more than 20 Transmitters are stored, the first stored Transmitter will be replaced. (i.e. the 21st Transmitter replaces the 1st stored Transmitter.)

Removing ALL Transmitters:

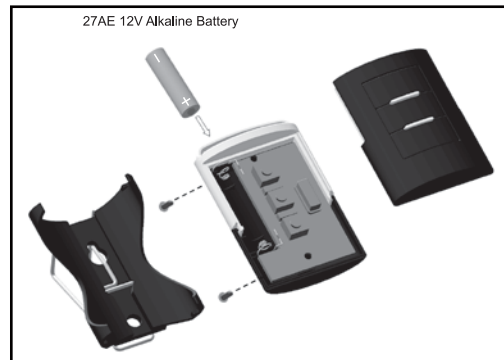
To remove ALL Transmitters from memory, press and hold the "LEARN" button above 5 seconds. The courtesy light will flash 3 times\* or "OK" LED will flash and beep 2 times\*\* indicating. ALL transmitters have been removed from memory.

\* For Model 425-1605

\*\* For Model 425-1636/ 425-1656



**IMPORTANT**  
WORKS EXCLUSIVELY WITH  
XTREME GARAGE® AND  
PERFORMAX™ DOOR OPENERS  
AND ACCESSORIES



Replacing Transmitter Battery:

When the battery of the hand held Transmitter is low, the indicator light will become dim and/or the range of the Transmitter will decrease. To replace the battery, unscrew the transmitter cover. Replace with a 27AE 12 volt alkaline battery with polarity shown in the figure above.

## One-Year Limited Warranty:

If, during normal use, this Performax Garage product breaks or fails due to a defect in material or workmanship within one year from the date of original purchase, simply bring this item and its sales receipt back to your nearest Menards retail store for a free equivalent replacement within that one year.

This warranty:

- (1) excludes expendable parts including but not limited to light bulbs and/or batteries;
- (2) shall be void if this product is used for commercial and/or rental purpose; and
- (3) does not cover any losses, injuries to persons/property or costs.

**This warranty does give you specific legal rights and you may have other rights, which vary from state to state.**

This device complies to FCC Rules for HOME OR OFFICE USE.

Operation is subject to the following two conditions:

- (1) This device may not cause harmful interference, and (2) this device must accept any interference received, including interference that may cause undesired operation.