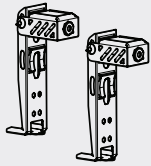


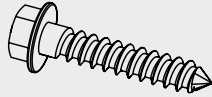
CONNECTING PHOTO EYE SAFETY SYSTEM

Look in the box for:

Photo Eyes



4 x Screws
#12 x 1-1/4"



Insulated Staples



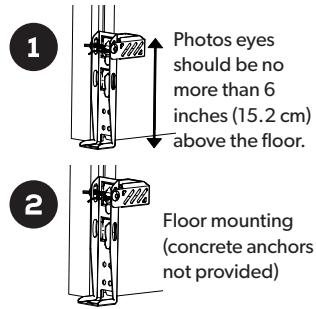
⚠ WARNING



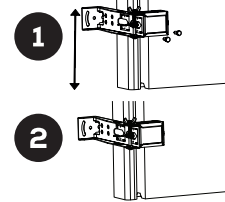
To prevent **SERIOUS INJURY** or **DEATH** from electrocution:

- Power **MUST NOT** be connected until instructed.
- The garage door opener will not operate until the photo eye safety system is properly connected and aligned.
- Install the photo eye safety system **NO** higher than 6 inches (15 cm) above the floor.
- No part of garage door or other objects should obstruct the photo eye safety system during door-closing.

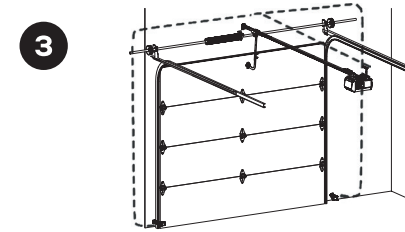
Mount photo eyes using #12 x 1-1/4" screws provided.



Alternative mounting location:
Door track / wall mounting. Photo eyes should be no more than 6 inches (15.2 cm) above the floor.

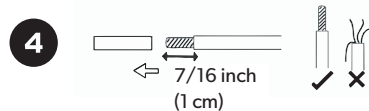


Run wire to power head. Use insulated staples to secure photo eye wires to wall and ceiling. Take care not to puncture the wires while securing staples.

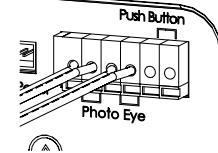


* **VERY IMPORTANT!** *

Strip 7/16 inch (1 cm) of insulation from the end of the wire.



Each pair of terminals **MUST** be connected with one white wire and one striped wire (non-polarized) from the **SAME** photo eye.



Cut and discard excess wire. Use small flat head screwdriver to push in grey tab on the terminal block located on the rear panel of the power head. Insert 1/2 inch (1.2 cm) of the wire into the terminal while pushing in the tab.

